

PROJECT PROFILE

ME-33

Client:

EXXCEL Contract Management
250 East Broad Street, Suite 1150
Columbus, Ohio 43215

Objective:

Provide design, structural engineering, materials procurement and erection for a large distribution center for tires.

Performance Results:

Erection Start September 2001
Building Enclosed November 2001

Perspective:

EXXCEL needed a partner that could come up with the lowest in-place construction solution for a large warehouse. BlueScope Construction's expertise in design and building large warehouse structures enabled the warehouse to be completed at the lowest cost and on schedule even though the project was delayed. In fact, the roof deck was down 20 days ahead of schedule.



Location: Continental General Tire Distribution Center
1915 Rohr Road
Obetz, Ohio 43207

End Use: Warehouse/distribution center for tires

Size: 758,671 total square feet
485' x 1575' x 32'

Structure: Fixed base columns, joist girders, bar joists, portal joists, and truss purlins

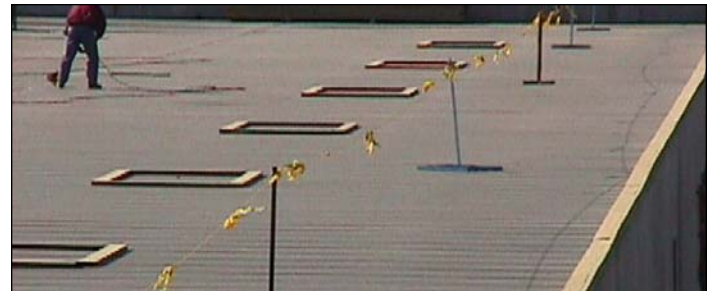
Walls: 8" site-cast tilt-up concrete walls

Roof: 22 gauge deck provided for EPDM roof

Insulation: Roof-4", R-13

Architect: MacGregor Associates, Atlanta, Georgia

Engineering: BlueScope Construction, Inc., Kansas City, Missouri



BlueScope Construction, Inc.
1540 Genessee Street
Kansas City, Missouri 64102-1069
816-245-6000 · FAX 816-245-6099
sales@bluescopeconstruction.com